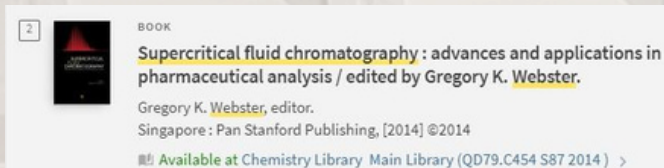


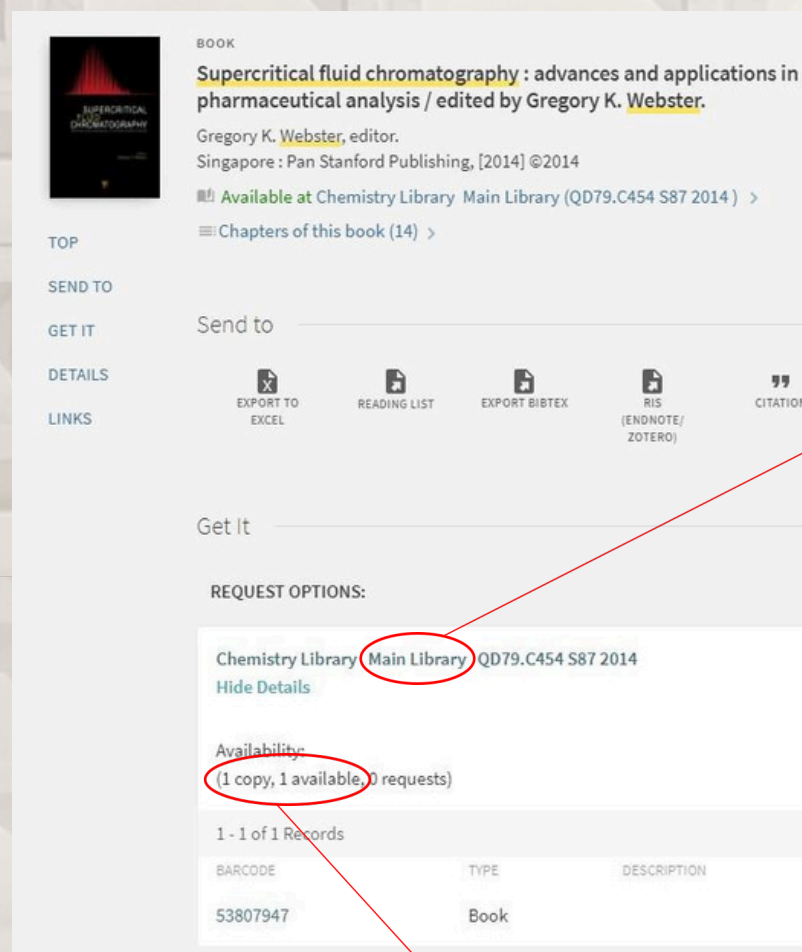
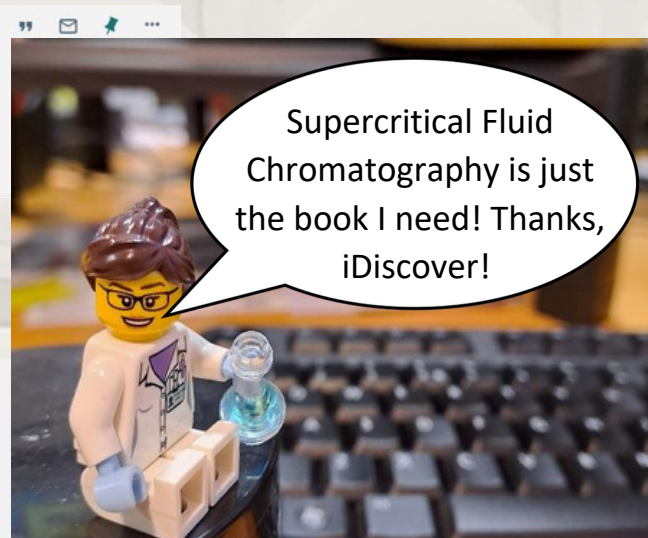
Finding a Book in the Chemistry Library

So you've found a book you need in iDiscover.*



How can you then find that book in the library?

First of all, let's look at the iDiscover record.

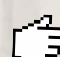


We can see here that it says 'Main Library' next to 'Chemistry Library'. That tells us which part of the library to look in. Most of our books are in the Main Library, but you may also find books which are in our Blue Books or Reference sections – more on this later.

We can also see that the library owns one copy of this book, and that copy is currently 'available' and 'in place'. That means that, according to our records, this book is on the library shelves and is available for borrowing.

Occasionally books end up out of order on the shelves, which means that a book can appear as 'available' on the system but isn't where you expect to find it. If this happens, please ask a member of library staff for help.

*Need help using iDiscover? Try the Cambridge LibGuide

 (<https://libguides.cam.ac.uk/idiscover>) or ask a member of the library staff for help.

REQUEST OPTIONS:

Chemistry Library Main Library **QD79.C454 S87 2014**

[Hide Details](#)

Availability:

(1 copy, 1 available, 0 requests)

The most useful bit of information the iDiscover record gives us, however, is this code of letters and numbers. This is the book's class mark, or call number, and it tells us exactly where to find the book in the library.

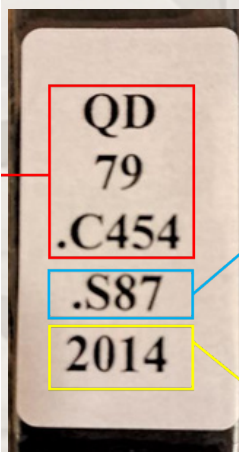
Out there in the wild, class marks look a little different. They appear on the white labels on the spines of books.



The Chemistry Library organises books according to the Library of Congress Classification Scheme. Let's get better acquainted with that.

This part is the subject identifier. Each book is assigned between 1 and 3 letters and a whole number between 1 and 99 according to subject. There may also, as in this example, be a decimal extension to specify topic.

QD is the identifier for Chemistry, but you'll find we also have books from Physics (QC), Maths (QA) and other related subjects. Find out more about how subject classification works on our website: <https://tinyurl.com/3p5urtj2>



This bit is the item number. It has the first letter of the author's surname (or the title in an edited work) followed by numbers.

This is the date of publication. Useful if you want to know at a glance whether you have the most recent edition.



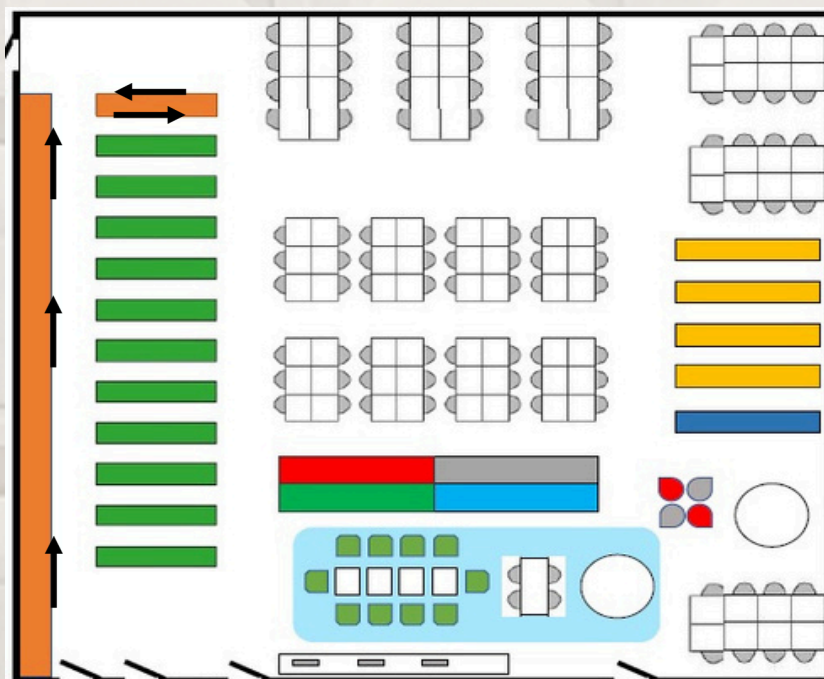
First, go to the right part of the library. We know from the iDiscover record that our book is in the Main Library.

The Main Library is the section in orange on the library map – in other words, along the left-hand wall when you enter the library.

On this version of the map, the black arrows show the direction in which the books are ordered. As you can see, the ordering starts from the corner nearest the library entrance.

The books are in class mark order, which means QA comes before QB, and so on. The books are further ordered by subsequent elements of the class mark. QA19 before QA59, for example.

You're almost there, but the next bit is **really important**.

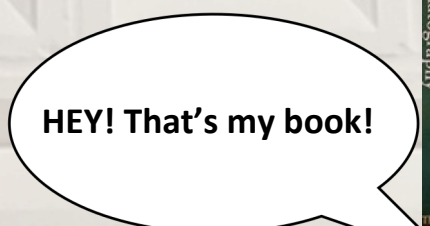


Really Important:

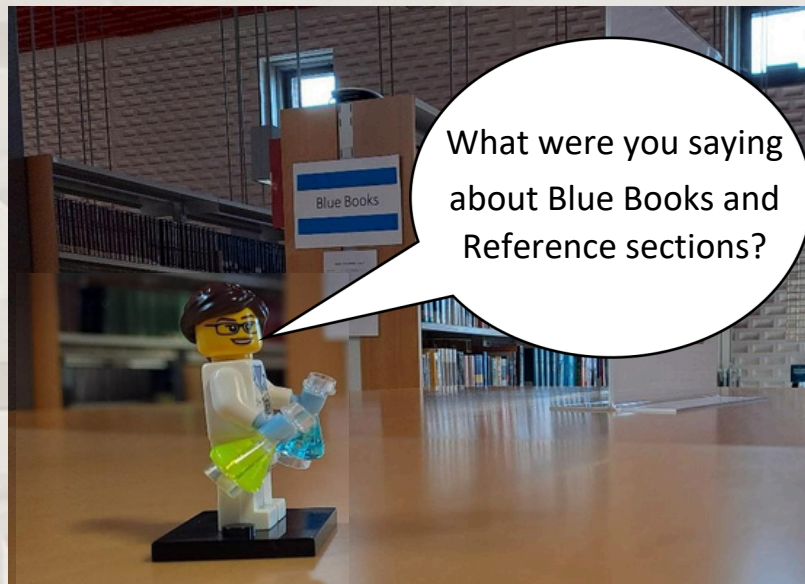
If you have lots of books with a similar subject identifier - like the shelf on the previous page, where everything is classified QD79 - then you need to look at the decimal extension and/or the item number.

Numbers that appear in these parts should be read in decimal sequence. For instance, B.38 would appear after B3 but before B.4,

We can see this in the middle of our example shelf, where QD79.C454 comes before QD79.C46 and QD79.C8.



That's great Roz, but this is a library – please don't shout in here.



Not all library books are in the Main Library section! Sometimes on iDiscover you will find a record that looks like this:

BOOK

Spectra of atoms and molecules / Peter F. Bernath.

Peter F. Bernath author.

Third edition. Oxford : Oxford University Press, 2016. ©2016

Available at Chemistry Library Blue Book collection (QC454.A8 .B47 2016 (Short loan)) and other locations >

Chapters of this book (19) >

TOP

SEND TO

GET IT

DETAILS

LINKS

Send to

EXPORT TO EXCEL READING LIST EXPORT BIBTEX RIS (ENDNOTE/ ZOTERO) CITATION PERMALINK PRINT E-MAIL

Get It

Sign-in for more options Login to iDiscover

REQUEST OPTIONS:

Chemistry Library > Blue Book collection > QC454.A8 .B47 2016 Short loan (1 copy, 1 available, 0 requests)

Chemistry Library > Blue Book collection > QC454.A8 .B47 2016 Reference only (1 copy, 1 available, 0 requests)

Here we can see that the Chemistry Library has two copies of this book, a 'Short loan' copy and a 'Reference only' copy, both of which are in the Blue Book section.

The Blue Book section is where we keep books that appear on Undergraduate reading lists. We often have multiple copies of these books, because they are quite heavily used.

Short loan books can only be borrowed for 4 days at a time and, unlike books borrowed from the Main Library, they do not automatically renew.

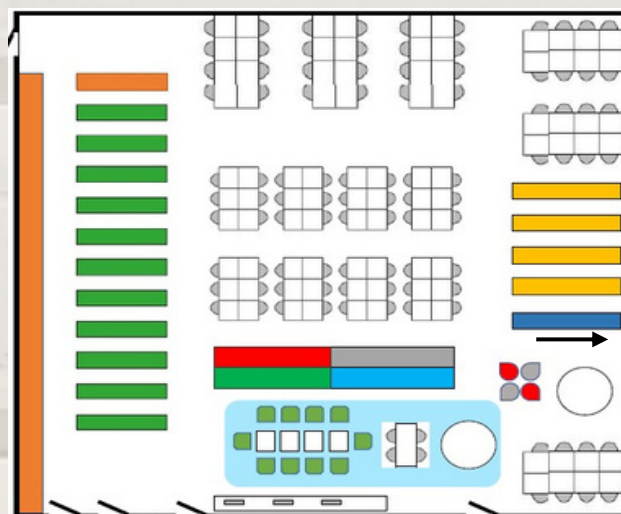
Reference only books cannot be taken out of the library space.

So how do I find a book in the Blue Book collection?

The Blue Book collection is the dark blue section on the library map - or the nearest shelf on the far right when you enter the library.

Just like the Main Library, books in the Blue Books section are categorized and ordered using the Library of Congress Classification Scheme.

As indicated by the black arrow on the map, the ordering of the Blue Book section begins on the left and runs towards the wall.

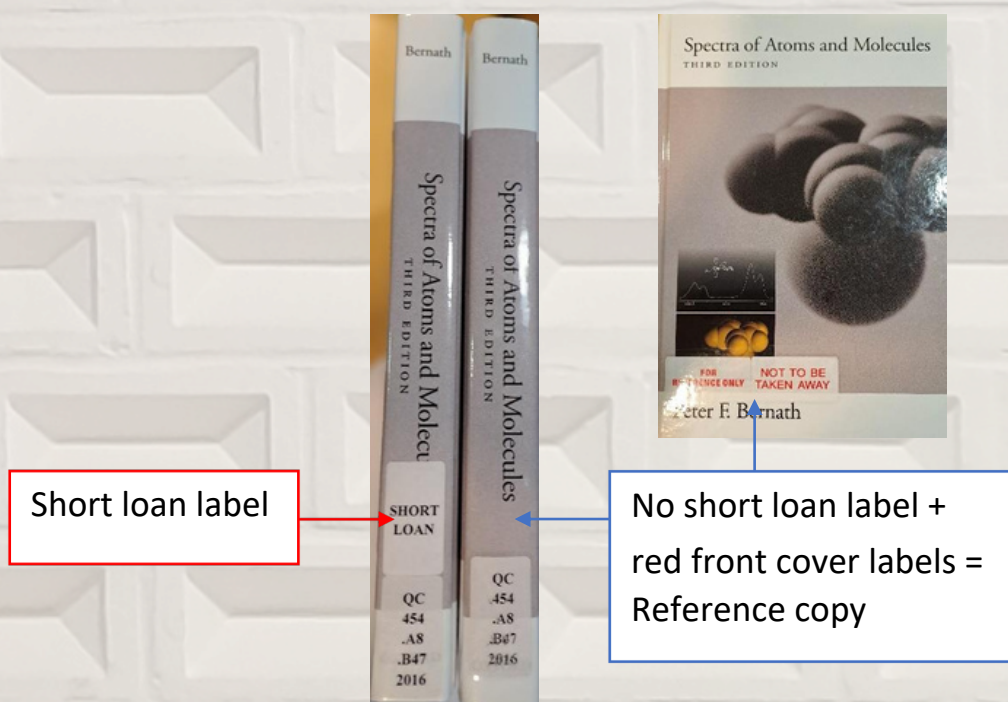


How do I know which version of the book I've found?

As you can see from the iDiscover record above, both the Short Loan copy and the Reference copy have the same class mark. This is because they are copies of the same book, and it should mean that they are shelved next to each other.

To tell the difference and know whether the copy you've found is borrowable, you just have to look at the book.

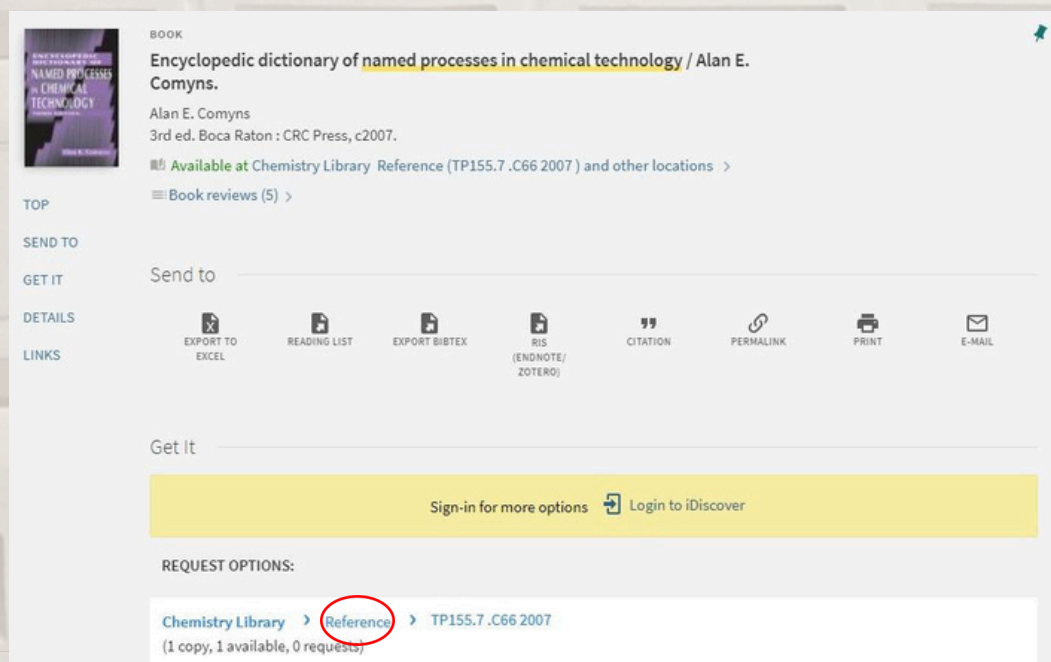
A Short Loan copy will have a sticker saying 'Short Loan' on the spine above the class mark. A reference copy will have labels with red text saying 'for reference only' and 'not to be taken away' on the front.



Wait – if there are reference books in the Blue Book section, what's all this about a separate Reference section?

The Reference section is for the very small number of library books which aren't borrowable and do not appear on Undergraduate reading lists.

This is how books in the Reference section appear on iDiscover.



The Reference section is the red section near the centre of the library on the map.

Like the other book sections, books in the Reference section are categorised and ordered using the Library of Congress Classification Scheme.

As indicated by the black arrow on the map, the Reference books are ordered from left to right (when you face the shelf), towards the Main Library section.

